



Primary Care Genetics Society



## PCGS Conference

### The Relevance of Clinical Genetics to General Practice Medicine

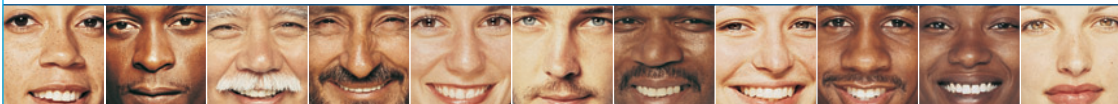
With the recent advances made in the understanding of the Human Genome, clinical genetics has become very relevant for General Practice.

The implications for primary care practice include a better understanding of the genetic basis of diseases such as cancer, reproductive medicine, diabetes and heart disease and therefore the potential for intervention. This includes managing patients with genetic disorders, screening advice, genetic testing and dealing with ethical dilemmas in practice.

**Wednesday  
14th February 2007**

**The Law Society's  
Hall, London**

This conference programme offers a series of talks, given by experienced professionals, who will attempt to address some of the issues increasingly encountered by primary care professionals.



## Programme

**09.00** Registration and Exhibition

**10.00** Chairman's Introduction

Professor Michael Modell, Emeritus Professor of Primary Health Care, RF & UCMS, London

**10.15** Family History and Genetic Screening – A fast-track to diagnosis?

Dr Nadeem Qureshi, Queens Medical Centre, Nottingham

**10.45** Cardiovascular medicine: How genes impact on risk, treatment and outcome

Dr Hugh Montgomery, Centre for Cardiovascular Genetics, London

**11.15** Coffee

**11.40** Cancer Genetics: Practical guidance on clinical investigation, screening and management

Professor Shirley Hodgson, Medical Genetics, St Georges Hospital, London

**12.10** Management of Chronic Genetic Conditions in Primary Care

Dr Paul Brennan, Institute of Human Genetics, Newcastle

**12.40** Lunch

**13.40** Debate: This House believes that primary care is well placed to diagnose genetic conditions.

Chairman's Introduction Dr Imran Rafi GPwSI Genetics and Senior Lecturer, St George's Hospital, London

For the motion Dr Nigel Starey, GPwSI Genetics, Prestwood House Surgery, Derbyshire

Against the motion Dr Ian Robinson, GPwSI Genetics, Broom Leys Surgery, Leicestershire

Questions to speakers and discussion

Vote

**14.35** The Psychosocial implications of genetic testing

Professor Teresa Marteau, Psychology and Genetics Research Group at King's College, London

**15.05** Clinical Genetics: Ethical issues facing primary care

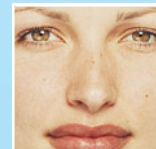
Dr Anneke Lucassen, Clinical Genetics Service, Princess Anne Hospital, Southampton

**15.35** Genetics education for Primary Care

Dr Virginia Leggatt, GPwSI Genetics, East Barnwell Health Centre, Cambridge

**15.50** Summary and Evaluation Forms

**16.00** Programme Close and Wine reception





## Venue



### Venue:

The Law Society's Hall, 113 Chancery Lane, London WC2A 1PL  
Tel: 020 7242 1222

### Nearest Mainline Stations:

Waterloo Station, Liverpool Street, Charing Cross (all are a short taxi ride away)

### Nearest Underground Stations:

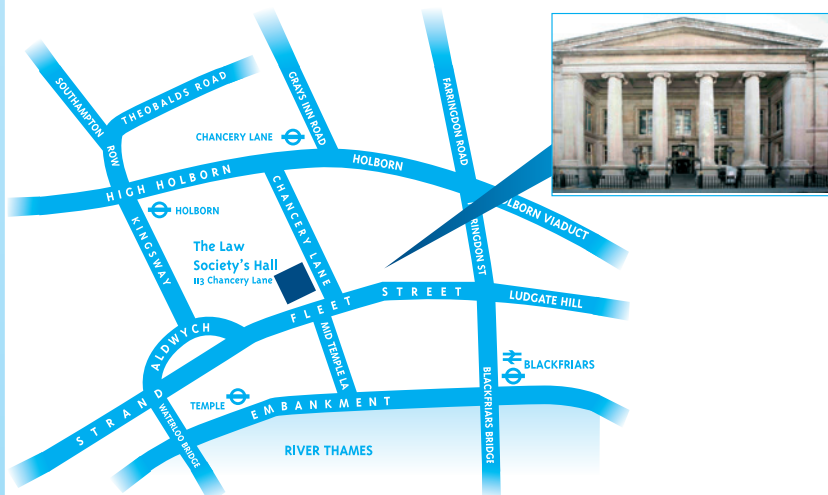
Chancery Lane (Central Line), Temple & Blackfriars (Circle and District Lines)

### Parking

Parking outside the Law Society is not allowed during the normal working day. All visitors should be dropped off or picked up from outside the main entrance. There are some parking meters in the vicinity. The nearest two public disabled parking spaces are located at the junction of Chancery Lane and Southampton Buildings.

### Closest NCP Car Park:

International Press Centre Ug, 76 Shoe Lane, London EC4A 3JB  
Tel: 020 7353 7322



PCGS Secretariat  
c/o Innervate Ltd  
117 Waterloo Road  
London SE1 8UL  
Tel: 020 7921 0002  
Fax: 020 7760 7193  
info@pcgs.org.uk  
www.pcgs.org.uk

**Keynote Speaker: Dr Hugh Montgomery**

Hugh directs the UCL Institute for Human Health and Performance, where he leads the science for Xtreme Everest (www.xtreme-everest.co.uk) – a physiological research expedition to the summit next year.

Hugh obtained a BSc in Circulatory and respiratory Physiology in 1984,



and his medical degree in 1987. Since then, he has been accredited in Intensive Care Medicine, Cardiology and General Internal Medicine. His research career began in 1992 and, following completion of his MD, he has led an expanding research group. His work has focused on the use of gene-environment interactions to study mechanisms of health, with results exported in translational work to disease states.

He has two sons, and a parallel career writing children's books (most recently 'The Voyage of the Arctic Tern' and 'Cloudsailors').



**PCGS Conference**

Supported by:



A registered charity.  
Number 803424

## Registration Form

- I would like to register to attend the PCGS Conference on 14th February 2007  
 I am unable to attend, but interested in receiving further information about the PCGS

Title	Firstname	Surname
Job Title		
Organisation		
Address		
Town		
County	Postcode	
Telephone	Email	

**Registration Fee:** Book promptly to receive our early booking discount!

Before 31st December 2006: £85\* (plus receive a FREE copy of Genes & Life DVD)

After 31st December 2006: £130\*

- I enclose a cheque for the total made payable to Innervate Ltd  
 Please invoice me for the total amount payable  
 Please charge my debit / credit card for the total amount payable  
 Delta    Maestro    MasterCard    Visa



Name on card:

Number:	3 digit security code:
Expiry date:	Issue number (Maestro):
Date:	Signature:

Cancellations received before 15th January 2007 will be refunded with a deduction of £35\* for administration purposes. Refunds will not be made for cancellations received after this date, but named substitutions will be allowed at any time.

**Please return completed form to:** PCGS Secretariat, c/o Innervate Ltd, 117 Waterloo Road, London SE1 8UL Or fax to: 020 7760 7193

From time to time we may send you additional information on the services of Innervate Ltd (Secretariat to the PCGS) and its products.

If you do not wish to receive information please tick this box:

\*All amounts are inclusive of VAT.